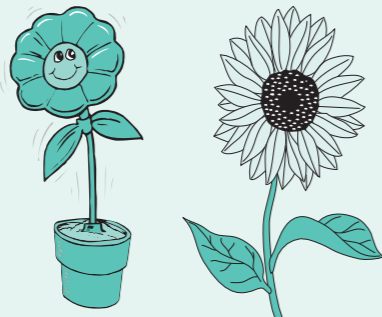


Living and non-living things

1 Here is a plastic plant and a sunflower plant. Join up the picture to the correct sentences.

- It can grow.
- It will never die.
- It needs sunlight.



- It takes up water.
- It has roots.

1
2 marks

2 Connect each sentence to either the rubber duck or the real bird.

- It can move itself.
- It eats seeds.
- It breathes.
- It will grow into an adult bird.
- It will not grow.



- It can only move if someone moves it.
- It cannot eat.
- It can hear and see.
- It has no senses.
- It can lay eggs.

2
2 marks

3 How do you know a living thing is alive?
Remember this could be an animal or a plant.
List **three** things that tell you that it is alive.

3
3 marks

Total marks for this page

Variables affecting plant growth

1 Class 3W are investigating whether plants need light to grow. They plant three geranium seedlings in individual pots and measure their height.



They put one pot on the windowsill, another pot in a shady area of the classroom and the third one in their teacher's cupboard. They water them each day and leave them to grow for two weeks.

a) List two things that the children should keep the same in order to make this a fair test.

1a
2 marks

b) Describe what you think each of the plants will look like in two weeks' time when the children measure them.

The geranium in the cupboard will look

The geranium in the shady place will look

The geranium on the windowsill will look

1b
3 marks

c) Cameron and Tahil become interested in the different parts of a plant and want to find out about the function of the roots.

Describe the main function of the roots of a plant.

1c
1 mark

Total marks for this page